

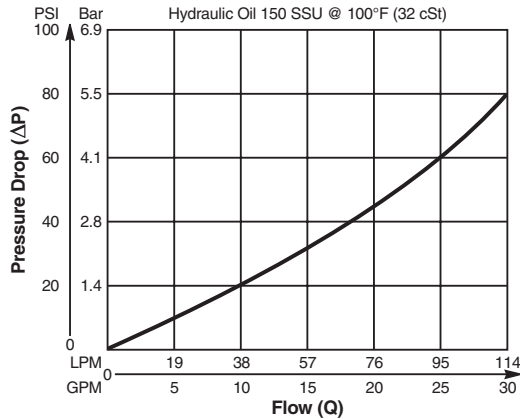
**Valve/Cavity Compatibility**

For additional information see Technical Tips on pages BC1-BC2.

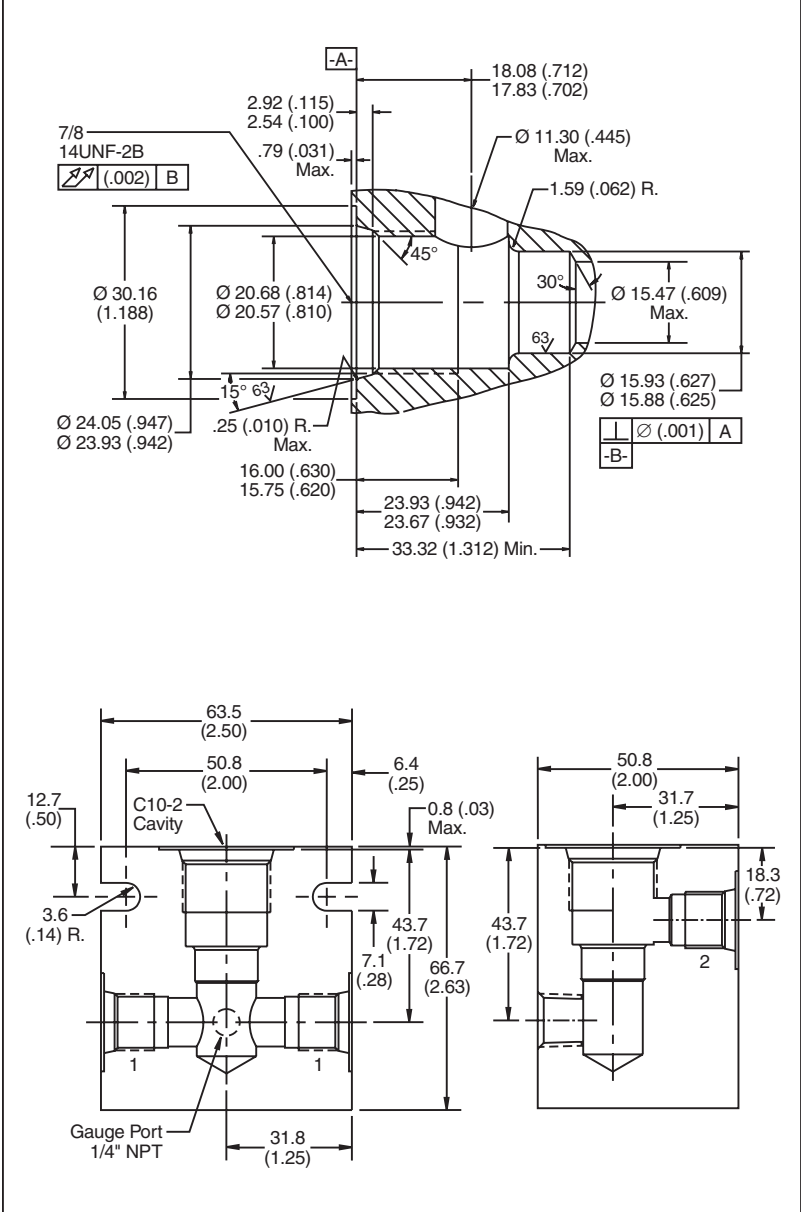
		VALVE				
		Winner's Circle	Parker	Waterman	FPS	CEC
CAVITY	Winner's Circle	X	X	X	X	X
	Parker	X	X	X		
	Waterman	X	X	X		
	FPS	X			X	X
	CEC	X			X	X

**Performance Curve**

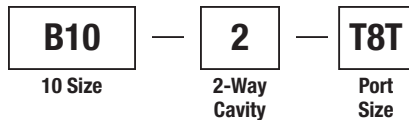
**Pressure Drop vs. Flow**



**Dimensions** Millimeters (Inches)



**Ordering Information**



Code	Port Size
T8T	SAE - 8

**Form Tool:** Rougher None  
 Finisher NFT10-2F  
**Weight:** 1.4 kg (3.0 lbs.)

*\*Please be advised that this is a non-core line body.  
 Additional lead-time and/or pricing requirements may exist when ordering.*